

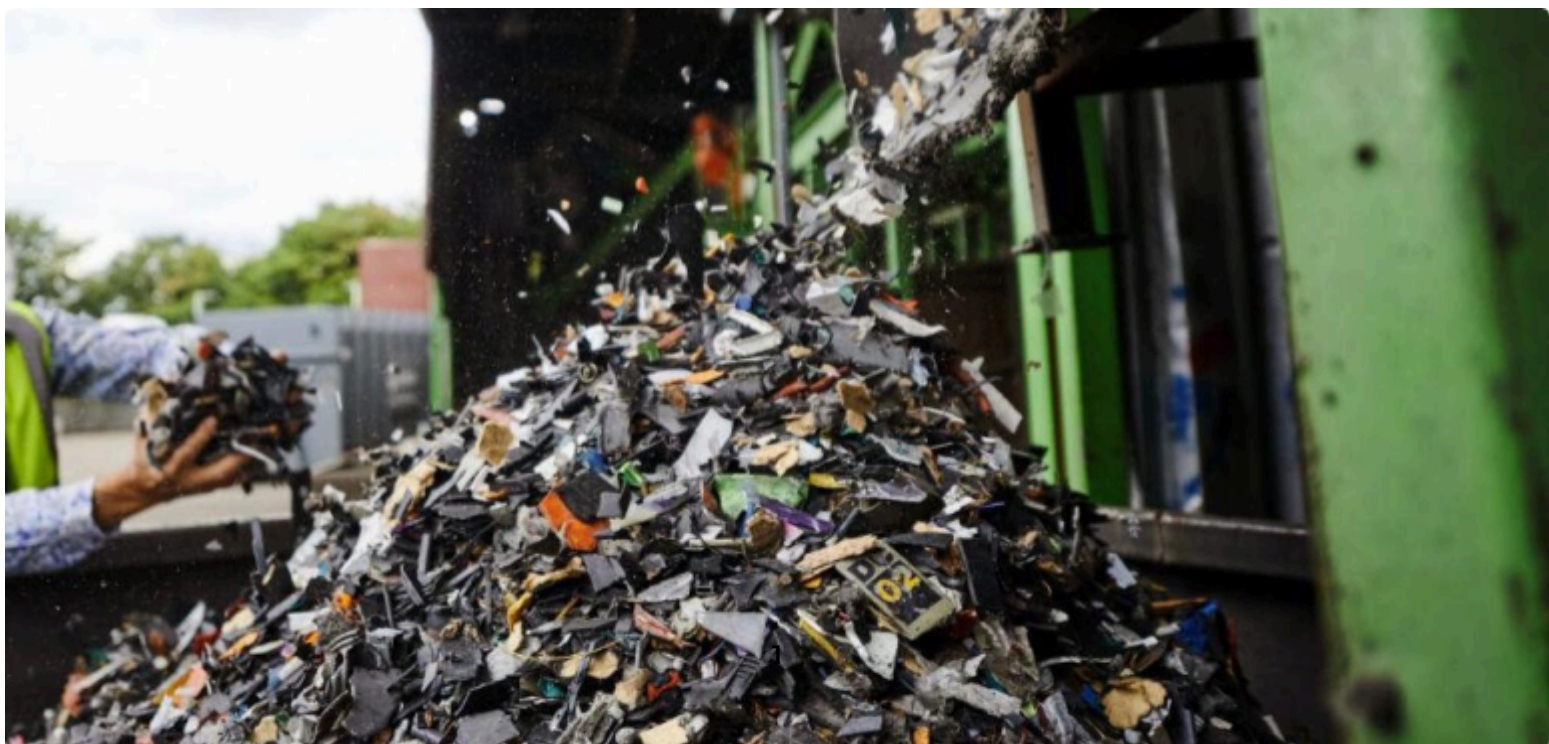


Industry briefing

UK e-waste briefing 2025

A look back at 2025 WEEE data

April 2026



WEEE data summary 2025

This briefing presents 2025 collections compared to targets and to 2024 collections.

- Total collections of household waste electricals **performed under target in 2025**, (even when including additional tonnages provided by DEFRA from non-evidenced recycling in 2025)
- Collections of large household appliances, cooling appliances and photovoltaics met 2025 targets, but collections of display equipment, lamps and small mixed electricals did not
- Evidenced electrical recycling collections **increased between 2024 and 2025 by almost 3%** (13,248 tonnes)
- Including non-evidenced tonnages, 2024 to 2025 collections **increased by almost 4%** (17,911 tonnes)

Performance against targets

Evidenced household collections

WEEE Data: 2025 evidenced collections versus targets				
Category (tonnes)	Collected	Target	Difference	Performance
01. Large household appliances	175,200	172,384	+2,816	101.63%
02. Small household appliances	36,907	37,795	-888	97.65%
03. IT and telecommunications equipment	40,010	42,350	-2,340	94.48%
04. Consumer equipment	22,488	23,447	-959	95.91%
05. Lighting equipment	6,244	6,476	-232	96.42%
06. Electrical and electronic tools	27,668	29,577	-1,909	93.55%
07. Toys, leisure and sports equipment	6,203	6,541	-338	94.83%
08. Medical devices	45	89	-44	50.41%
09. Monitoring and control instruments	1,226	1,324	-98	92.60%
10. Automatic dispensers	33	18	+15	184.51%
11. Display equipment	46,265	51,631	-5,366	89.61%
12. Appliances containing refrigerants	142,090	141,068	+1,022	100.72%
13. Gas discharge lamps and LED light sources	3,450	4,066	-616	84.86%
14. Photovoltaic panels	1,670	519	+1,151	321.81%
Total	509,501	517,285	-7,784	98.50%

WEEE Data: 2025 evidenced collections versus targets				
Type (tonnes)	Collected	Target	Difference	Performance
A. Large household appliances	175,200	172,384	+2,816	101.63%
B. Cooling appliances	142,090	141,068	+1,022	100.72%
C. Display equipment	46,265	51,631	-5,366	89.61%
D. Lamps	3,450	4,066	-616	84.86%
E. Small mixed WEEE	140,825	147,617	-6,792	95.40%
F. Photovoltaics	1,670	519	+1,151	321.81%
Total	509,501	517,285	-7,784	98.50%

Total household collections (including lost tonnages)

WEEE Data: 2025 total collections versus targets				
Category (tonnes)	Collected	Target	Difference	Performance
01. Large household appliances	176,273	172,384	+3,889	102.26%
02. Small household appliances	37,870	37,795	+75	100.20%
03. IT and telecommunications equipment	40,864	42,350	-1,486	96.49%
04. Consumer equipment	23,088	23,447	-359	98.47%
05. Lighting equipment	6,407	6,476	-69	98.93%
06. Electrical and electronic tools	28,436	29,577	-1,141	96.14%
07. Toys, leisure and sports equipment	6,355	6,541	-186	97.16%
08. Medical devices	45	89	-44	50.56%
09. Monitoring and control instruments	1,257	1,324	-67	94.94%
10. Automatic dispensers	33	18	+15	183.33%
11. Display equipment	46,307	51,631	-5,324	89.69%
12. Appliances containing refrigerants	142,102	141,068	+1,034	100.73%
13. Gas discharge lamps and LED light sources	3,450	4,066	-616	84.85%
14. Photovoltaic panels	1,677	519	+1,158	323.12%
Total	514,164	517,285	-3,121	99.40%

WEEE Data: 2025 total collections versus targets				
Type (tonnes)	Collected	Target	Difference	Performance
A. Large household appliances	176,273	172,384	+3,889	102.26%
B. Cooling appliances	142,102	141,068	+1,034	100.73%
C. Display equipment	46,307	51,631	-5,324	89.69%
D. Lamps	3,450	4,066	-616	84.85%
E. Small mixed WEEE	144,355	147,617	-3,262	97.79%
F. Photovoltaics	1,677	519	+1,158	323.12%
Total	514,164	517,285	-3,121	99.40%

Comparison to 2024

Evidenced household collections

WEEE Data: 2025 evidenced collections versus 2024				
Category (tonnes)	2025	2024	Difference	Increase
01. Large household appliances	175,200	167,316	+7,884	+4.71%
02. Small household appliances	36,907	35,692	+1,215	+3.40%
03. IT and telecommunications equipment	40,010	40,408	-398	-0.98%
04. Consumer equipment	22,488	22,527	-39	-0.17%
05. Lighting equipment	6,244	6,075	+169	+2.78%
06. Electrical and electronic tools	27,668	27,392	+276	+1.01%
07. Toys, leisure and sports equipment	6,203	5,903	+300	+5.08%
08. Medical devices	45	50	-5	-9.45%
09. Monitoring and control instruments	1,226	1,251	-25	-1.98%
10. Automatic dispensers	33	10	+24	+243.13%
11. Display equipment	46,265	47,107	-842	-1.79%
12. Appliances containing refrigerants	142,090	138,038	+4,052	+2.94%
13. Gas discharge lamps and LED light sources	3,450	4,055	-605	-14.92%
14. Photovoltaic panels	1,670	428	+1,242	+290.03%
Total	509,501	496,253	+13,248	+2.67%

WEEE Data: 2025 evidenced collections versus 2024				
Type (tonnes)	2025	2024	Difference	Increase
A. Large household appliances	175,200	167,316	+7,884	+4.71%
B. Cooling appliances	142,090	138,038	+4,052	+2.94%
C. Display equipment	46,265	47,107	-842	-1.79%
D. Lamps	3,450	4,055	-605	-14.92%
E. Small mixed WEEE	140,825	139,308	+1,517	+1.09%
F. Photovoltaics	1,670	428	+1,242	+290.03%
Total	509,501	496,253	+13,248	+2.67%

Total household collections (including lost tonnages)

WEEE Data: 2025 total collections versus 2024				
Category (tonnes)	2025	2024	Difference	Increase
01. Large household appliances	176,273	167,316	+8,957	+5.35%
02. Small household appliances	37,870	35,692	+2,178	+6.10%
03. IT and telecommunications equipment	40,864	40,408	+456	+1.13%
04. Consumer equipment	23,088	22,527	+561	+2.49%
05. Lighting equipment	6,407	6,075	+332	+5.46%
06. Electrical and electronic tools	28,436	27,392	+1,044	+3.81%
07. Toys, leisure and sports equipment	6,355	5,903	+452	+7.66%
08. Medical devices	45	50	-5	-9.18%
09. Monitoring and control instruments	1,257	1,251	+6	+0.49%
10. Automatic dispensers	33	10	+23	+240.94%
11. Display equipment	46,307	47,107	-800	-1.70%
12. Appliances containing refrigerants	142,102	138,038	+4,064	+2.94%
13. Gas discharge lamps and LED light sources	3,450	4,055	-605	-14.92%
14. Photovoltaic panels	1,677	428	+1,249	+291.63%
Total	514,164	496,253	+17,911	+3.61%

WEEE Data: 2025 total collections versus 2024				
Type (tonnes)	2025	2024	Difference	Increase
A. Large household appliances	176,273	167,316	+8,957	+5.35%
B. Cooling appliances	142,102	138,038	+4,064	+2.94%
C. Display equipment	46,307	47,107	-800	-1.70%
D. Lamps	3,450	4,055	-605	-14.92%
E. Small mixed WEEE	144,355	139,308	+5,047	+3.62%
F. Photovoltaics	1,677	428	+1,249	+291.63%
Total	514,164	496,253	+17,911	+3.61%

Detail by product type

- **Large household appliances collections** performed above target and increased from 2024
 - Collections performed around **2% over target**
 - Evidenced collections exceeded the 2025 target by 2,816 tonnes
 - Total collections (including lost tonnages) exceeded the target by 3,889 tonnes
 - Collections are **up by 5%** from 167,316 tonnes in 2024
 - 175,200 evidenced tonnes collected in 2025 (or 176,273 total tonnes including non-evidenced collections)
- **Cooling appliances collections** performed above target and increased from 2024
 - Collections performed **1% over target**
 - Evidenced collections exceeded the 2025 target by 1,022 tonnes
 - Total collections (including lost tonnages) exceeded the target by 1,034 tonnes
 - Collections are **up by 3%** from 138,038 tonnes in 2024
 - 142,090 evidenced tonnes collected in 2025 (or 142,102 total tonnes including non-evidenced collections)
- **Display equipment collections** performed under target and decreased from 2024
 - Collections performed **10% under target**
 - Evidenced collections missed the 2025 target by 5,366 tonnes
 - Total collections (including lost tonnages) missed the target by 5,324 tonnes
 - Collections are **down by 2%** from 47,107 tonnes in 2024
 - 46,265 evidenced tonnes collected in 2025 (or 46,307 total tonnes including non-evidenced collections)
- **Lamps collections** performed under target and decreased from 2024
 - No non-evidenced additional collections affected this stream
 - Collections performed **15% under target**, missing the 2025 target by 616 tonnes
 - Collections are **down by 15%** from 4,055 tonnes in 2024 to 3,450 tonnes in 2025
- **Small electricals collections** performed under target but increased from 2025
 - Collections performed **between 2-5% under target**
 - Evidenced collections missed the 2025 target by 6,792 tonnes (5%)
 - Total collections (including lost tonnages) missed the target by 3,262 tonnes (2%)
 - Collections are **up by between 1-4%** from 139,308 tonnes in 2024
 - 140,825 evidenced tonnes collected in 2025 (or 144,355 total tonnes including non-evidenced collections)
- **Photovoltaics collections** performed above target and increased from 2024
 - Collections performed **between 222-223% over target**
 - Evidenced collections exceeded the 2025 target by 1,151 tonnes
 - Total collections (including lost tonnages) exceeded the 2025 target by 1,158 tonnes
 - Collections are **up by between 290-292%** from 428 tonnes in 2024
 - 1,670 evidenced tonnes collected in 2025 (or 1,677 total tonnes including non-evidenced collections)

Electricals placed on the UK market

WEEE Data: 2025 versus 2024 household electricals placed on the UK market				
Category (tonnes)	2025	2024	Difference	Increase
01. Large household appliances	606,699	594,744	+11,955	+2.01%
02. Small household appliances	222,161	220,953	+1,208	+0.55%
03. IT and telecommunications equipment	66,208	63,733	+2,475	+3.88%
04. Consumer equipment	33,455	30,337	+3,119	+10.28%
05. Lighting equipment	76,351	61,106	+15,244	+24.95%
06. Electrical and electronic tools	90,030	79,628	+10,402	+13.06%
07. Toys, leisure and sports equipment	74,136	65,102	+9,035	+13.88%
08. Medical devices	3,632	2,769	+863	+31.17%
09. Monitoring and control instruments	26,284	23,224	+3,060	+13.17%
10. Automatic dispensers	420	291	+130	+44.57%
11. Display equipment	85,603	85,960	-357	-0.42%
12. Appliances containing refrigerants	242,877	222,806	+20,071	+9.01%
13. Gas discharge lamps and LED light sources	4,748	4,474	+275	+6.14%
14. Photovoltaic panels	189,007	177,687	+11,320	+6.37%
15. Vapes and electronic cigarettes	1,138	-	+1,138	
Total	1,722,750	1,632,814	+89,936	+5.51%

WEEE Data: 2025 versus 2024 household electricals placed on the UK market				
Type (tonnes)	2025	2024	Difference	Increase
A. Large household appliances	606,699	594,744	+11,955	+2.01%
B. Cooling appliances	242,877	222,806	+20,071	+9.01%
C. Display equipment	85,603	85,960	-357	-0.42%
D. Lamps	4,748	4,474	+275	+6.14%
E. Small mixed WEEE	592,677	547,143	+45,535	+8.32%
F. Photovoltaics	189,007	177,687	+11,320	+6.37%
Vapes	1,138	-	+1,138	
Total	1,722,750	1,632,814	+89,936	+5.51%

Detail by product type

- The amount of household electricals placed on the UK market has **increased by 6%** between 2024 and 2025
- Increases have been seen across all product types, with the exception of **display equipment** which **decreased by less than 1%**
- Since 15th August 2025, vape producers have reported the weight of products placed on the UK market under a **new vapes category**
- Using the data officially reported between 15th August to 31st December 2025, vapes sales were at 1,138 tonnes between these months
- Scaled up to a full year of reporting, vape sales in 2025 would be an **estimated 2,988 tonnes**

Online marketplaces

- Since 12th August 2025, **online marketplaces** have had an obligation to report data on sales made by their overseas sellers in the UK
- Using the data officially reported between 12th August to 31st December 2025, sales from these sellers reflects a **market share of 3.24%**
- Scaled up to a full year of reporting, these producers would make up an **estimated market share of approximately 8.32%**

WEEE Data: 2025 household electricals placed on the UK market through online marketplaces					
Category (tonnes)	2025 Total	OMPs (Aug-Dec)	Market share	OMPs (full year)	Predicted market share
01. Large household appliances	606,699	1,330	0.22%	3,419	0.56%
02. Small household appliances	222,161	16,417	7.39%	42,200	19.00%
03. IT and telecommunications equipment	66,208	6,931	10.47%	17,815	26.91%
04. Consumer equipment	33,455	2,602	7.78%	6,689	19.99%
05. Lighting equipment	76,351	9,024	11.82%	23,194	30.38%
06. Electrical and electronic tools	90,030	4,968	5.52%	12,769	14.18%
07. Toys, leisure and sports equipment	74,136	9,748	13.15%	25,055	33.80%
08. Medical devices	3,632	98	2.70%	252	6.94%
09. Monitoring and control instruments	26,284	1,881	7.15%	4,834	18.39%
10. Automatic dispensers	420	73	17.41%	188	44.74%
11. Display equipment	85,603	1,134	1.32%	2,915	3.41%
12. Appliances containing refrigerants	242,877	788	0.32%	2,026	0.83%
13. Gas discharge lamps and LED light sources	4,748	654	13.78%	1,682	35.42%
14. Photovoltaics	189,007	134	0.07%	344	0.18%
15. Vapes and electronic cigarettes	1,138	0	0.01%	0	0.02%
Total	1,722,750	55,781	3.24%	143,382	8.32%

Methodology

All calculations use the national data sets for WEEE collected in the UK and EEE placed on the UK market which can be found [here](#). WEEE collection targets for 2025 can be found [here](#). 2025 figures including non-evidenced recycling were shared by DEFRA and referenced [here](#).

Material Focus is an independent, not-for-profit organisation on a mission to stop valuable, critical and finite materials inside electricals from going to waste.

Insights

We identify, produce and share insights to improve the UK e-waste system and inform policy decisions.

Investments

We identify and fund projects that make it easier to reuse and recycle; or that encourage circular design.

Inspiration

We inspire, educate and encourage the UK public to fix, donate, sell and recycle their unwanted electricals through our Recycle Your Electricals campaign.